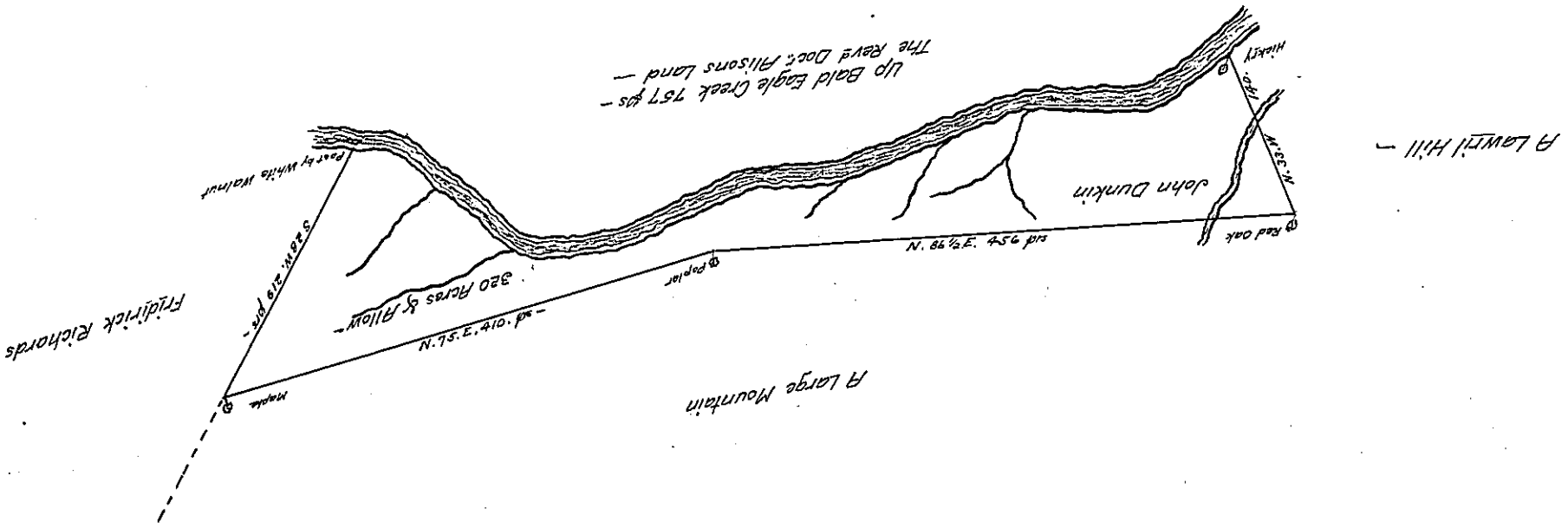


The Several Courses up the Creek from
the Hickry to the post by W. Walnut
Viz -

- S 46 W. 76 -
- S 80 W. 32 -
- S 59 W. 60 -
- S 55 W. 30 -
- S 60 W. 64 -
- N 73 W. 46 -
- S 83 W. 40 -
- S 68 W. 102 -
- N 82 W. 172 -
- N 55 W. 96 -
- N 41 W. 38 -
- 757 p^{rs}



A Draught of A Tract of Land situate in Bald Eagle Township Northumberland County, Containing three
Hundred and Twenty acres with the Usual allowance of Six $\frac{1}{2}$ Ct for Roads &c. - Survey'd on the 15th day
of August 1783. for John Keble in Right of John Dunkin by Virtue of A Warrant granted him bearing
date the 10th October 1774 - &c -

The Land for which said Warrant was originally ~~being~~ Granted being included in a survey made by
Charles Stewart D. S. to Jacob Erb on his Prior Warrant dated 11th August 1774, as appears by said
Stewarts Certificate on said Dunkins Warrant remaining in my hands &c. -

To John Lukens Esq^r
Surveyor Gen^l -

Jo. d. Wallis D.S.

IN TESTIMONY that the above is a copy of the original remaining on file in the Department of
Internal Affairs of Pennsylvania, made conformably to an Act of Assembly
approved the 16th day of February, 1833, I have hereunto set my Hand
and caused the Seal of said Department to be affixed at Harrisburg, this

Seventh day of October 1908.

Henry Howell
Secretary of Internal Affairs.